

# Hampshire Water Transfer and Water Recycling Project Environmental Statement - Figure 13.15 Hampshire Historic Landscape Characterisation

VOLUME NUMBER: 6

PLANNING INSPECTORATE SCHEME NUMBER: WA010002

APPLICATION DOCUMENT REFERENCE: 6.3

APFP REGULATION: 5(2)(a)

May 2026

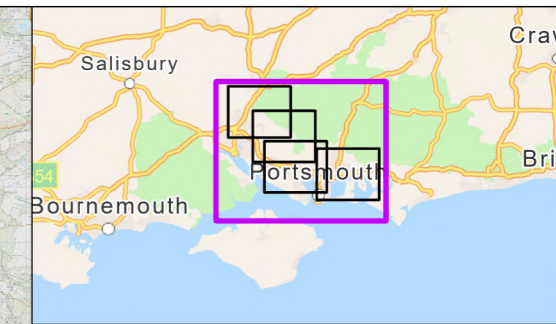
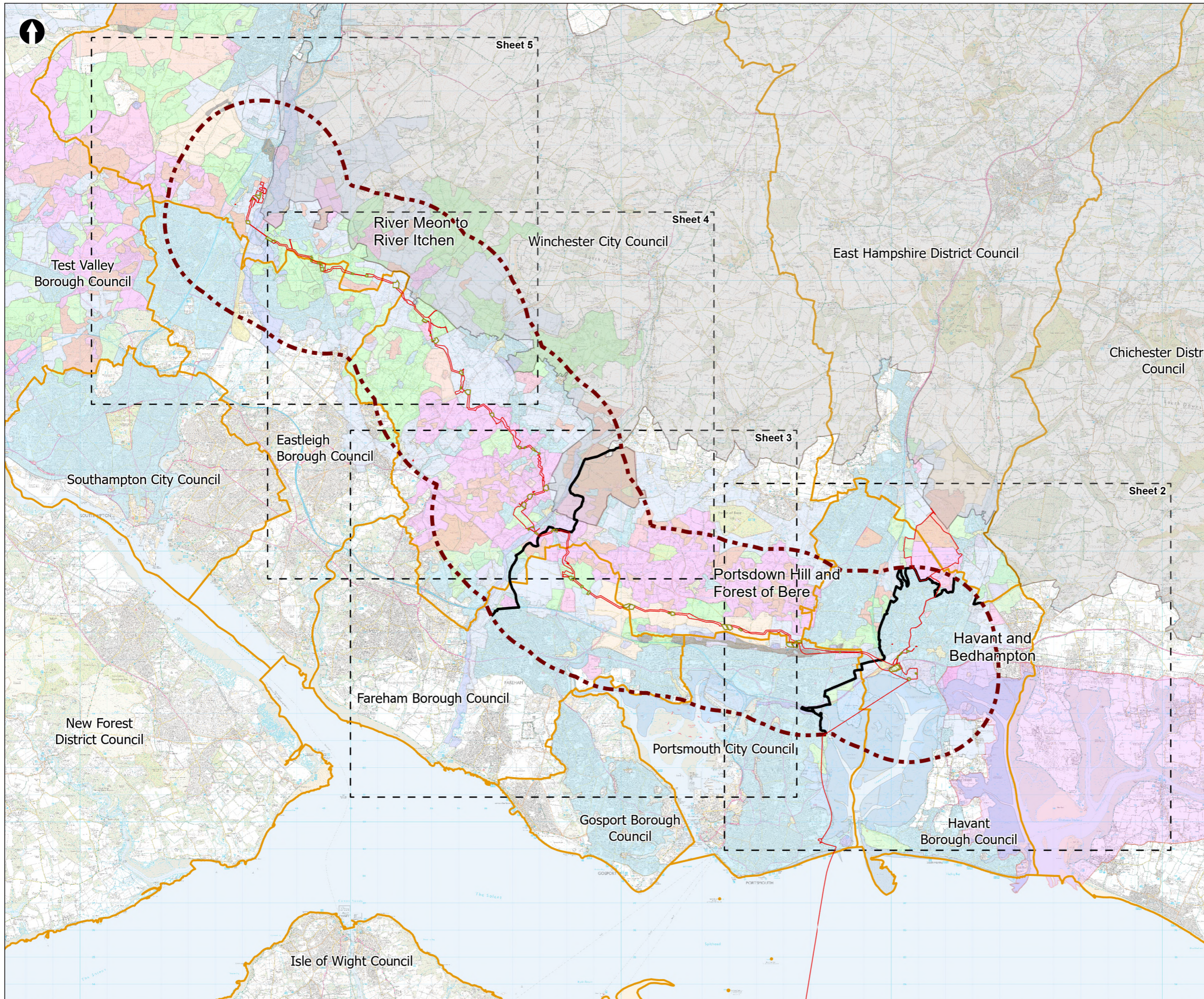
Version 0



from  
**Southern  
Water** 

The Southern Water logo consists of the words 'Southern' and 'Water' stacked vertically in a dark blue, sans-serif font. To the right of the word 'Water' is a graphic element consisting of three stylized, wavy lines in shades of blue, representing water.





- Order Limits
- Landscape Study Area 3km
- Principal sections within the study area
- Sheet extent boxes 1:50k
- Local planning authorities
- South Downs National Park
- Chichester Harbour National Landscape
- Water Recycling Plant Site
- Construction compounds
- Hampshire Historic Landscape Characterisation**
- 19th century plantations/other recent woodlands
- Assarted fields
- Assarted woodlands
- Coast
- Commons
- Communications
- Defence
- Downland
- Fields bounded by roads, tracks and paths
- Fields with wavy boundaries
- Former strips and furlongs
- Hangers
- Heathland
- Heathland plantations
- Horticulture
- Industry
- Irregular fields - straight boundaries
- Old settlements
- Other old woodlands
- Parkland
- Parliamentary fields
- Prairie fields
- Recent settlements
- Recreation
- Valley floor

Coordinate system: British National Grid; Datum: OSGB 1936  
 Data sources: © Crown copyright and database rights 2026 Ordnance Survey 0100031673. Sources: Esri, TomTom, Garmin, FAO, NOAA, USGS, © OpenStreetMap contributors, and the GIS User Community, © Hampshire County Council, All rights reserved.

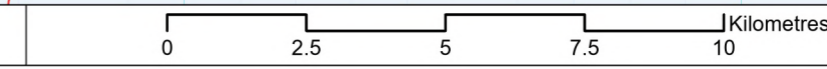
PROJECT TITLE  
 Hampshire Water Transfer and Water Recycling Project

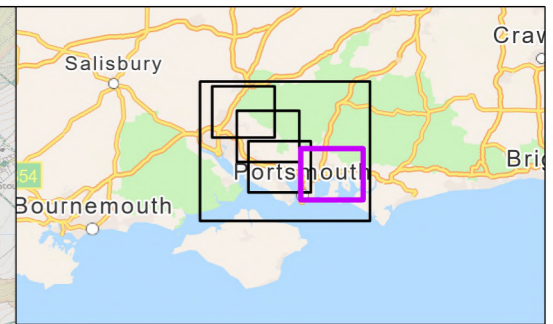
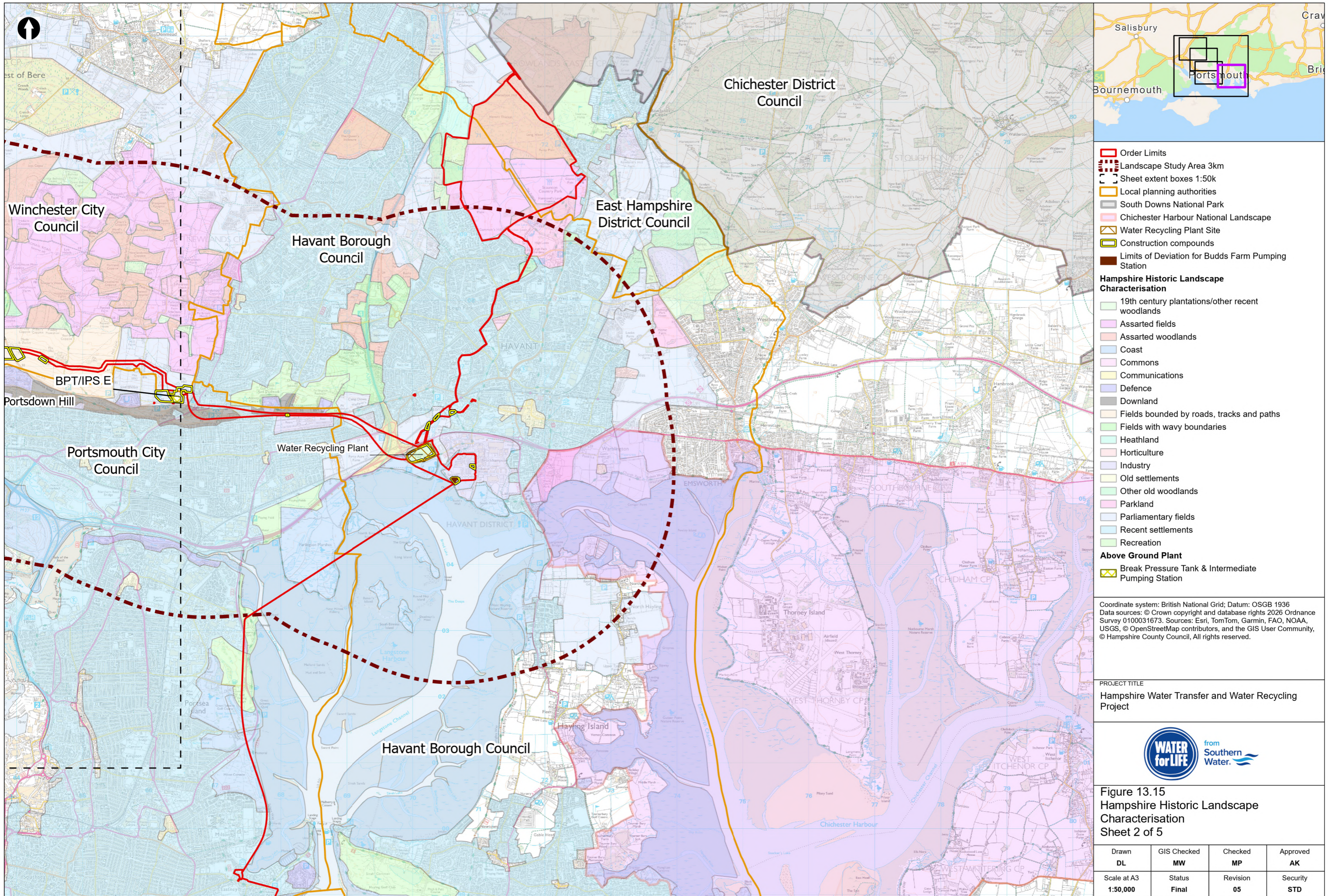


Figure 13.15  
 Hampshire Historic Landscape Characterisation  
 Sheet 1 of 5

Drawn <b>DL</b>	GIS Checked <b>MW</b>	Checked <b>MP</b>	Approved <b>AK</b>
Scale at A3 <b>1:136,000</b>	Status <b>Final</b>	Revision <b>05</b>	Security <b>STD</b>

Drawing Number  
**PC5223-RHD-ES-ZZ-D-Z-0139**





- Order Limits
  - Landscape Study Area 3km
  - Sheet extent boxes 1:50k
  - Local planning authorities
  - South Downs National Park
  - Chichester Harbour National Landscape
  - Water Recycling Plant Site
  - Construction compounds
  - Limits of Deviation for Budds Farm Pumping Station
- Hampshire Historic Landscape Characterisation**
- 19th century plantations/other recent woodlands
  - Assarted fields
  - Assarted woodlands
  - Coast
  - Commons
  - Communications
  - Defence
  - Downland
  - Fields bounded by roads, tracks and paths
  - Fields with wavy boundaries
  - Heathland
  - Horticulture
  - Industry
  - Old settlements
  - Other old woodlands
  - Parkland
  - Parliamentary fields
  - Recent settlements
  - Recreation
- Above Ground Plant**
- Break Pressure Tank & Intermediate Pumping Station

Coordinate system: British National Grid; Datum: OSGB 1936  
 Data sources: © Crown copyright and database rights 2026 Ordnance Survey 0100031673. Sources: Esri, TomTom, Garmin, FAO, NOAA, USGS, © OpenStreetMap contributors, and the GIS User Community, © Hampshire County Council, All rights reserved.

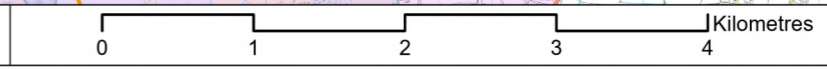
PROJECT TITLE  
 Hampshire Water Transfer and Water Recycling Project



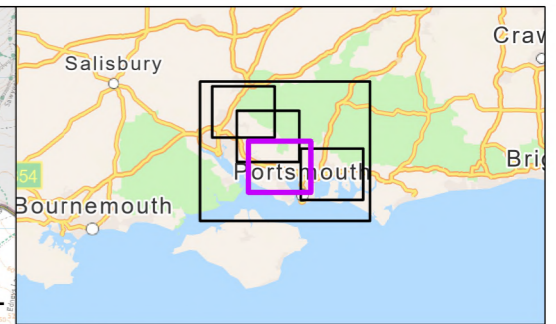
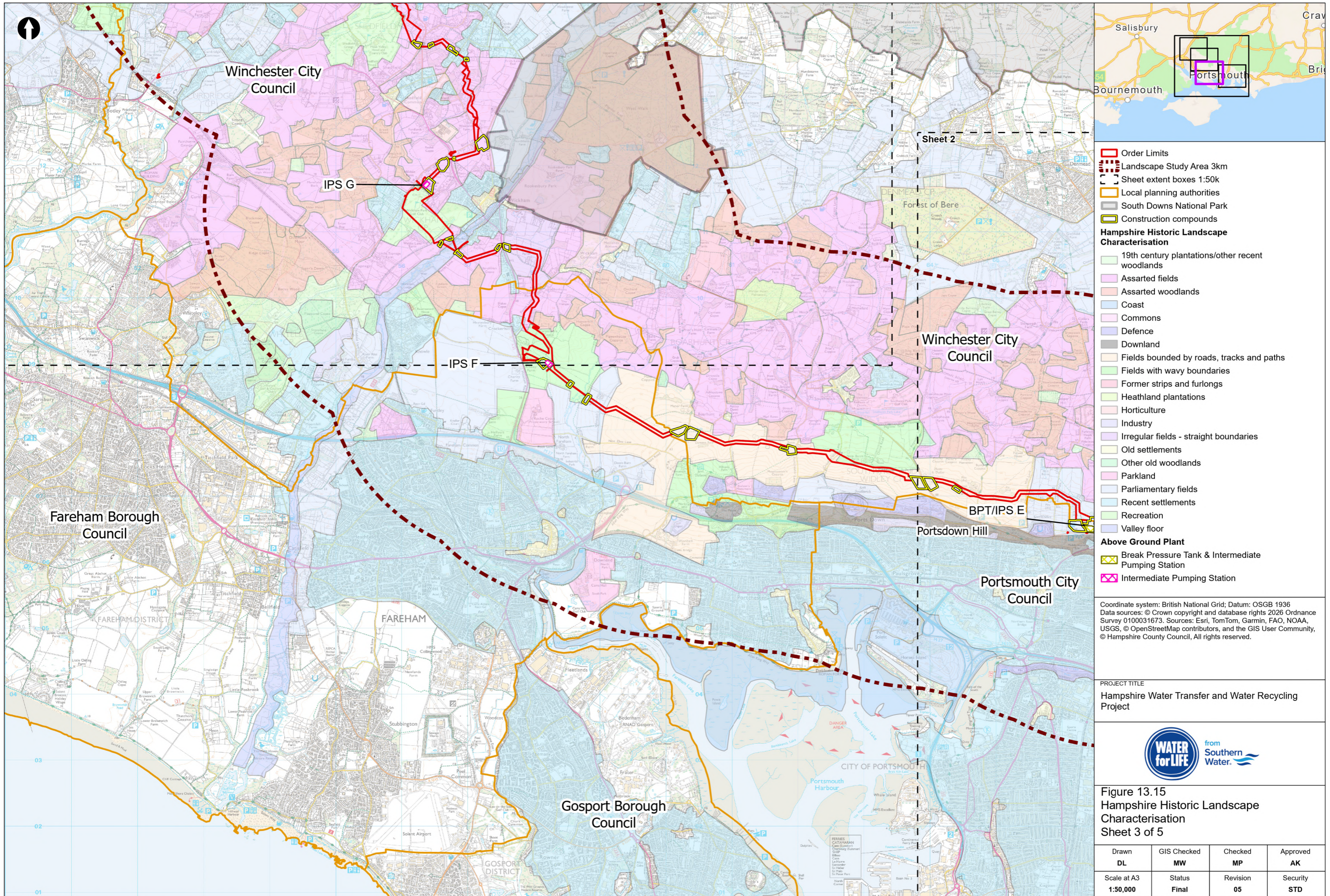
Figure 13.15  
 Hampshire Historic Landscape Characterisation  
 Sheet 2 of 5

Drawn <b>DL</b>	GIS Checked <b>MW</b>	Checked <b>MP</b>	Approved <b>AK</b>
Scale at A3 <b>1:50,000</b>	Status <b>Final</b>	Revision <b>05</b>	Security <b>STD</b>

© Southern Water 2026  
 This document is issued for the party which commissioned it and for specific purposes connected with the captioned project only. It should not be relied upon by any other party or used for any other purpose.  
 We accept no responsibility for the consequences of this document being relied upon by any other party, or being used for any other purpose, or containing any error or omission which is due to an error or omission in data supplied to us by other parties.



Drawing Number  
**PC5223-RHD-ES-ZZ-D-Z-0139**



- Order Limits
  - Landscape Study Area 3km
  - Sheet extent boxes 1:50k
  - Local planning authorities
  - South Downs National Park
  - Construction compounds
- Hampshire Historic Landscape Characterisation**
- 19th century plantations/other recent woodlands
  - Assarted fields
  - Assarted woodlands
  - Coast
  - Commons
  - Defence
  - Downland
  - Fields bounded by roads, tracks and paths
  - Fields with wavy boundaries
  - Former strips and furlongs
  - Heathland plantations
  - Horticulture
  - Industry
  - Irregular fields - straight boundaries
  - Old settlements
  - Other old woodlands
  - Parkland
  - Parliamentary fields
  - Recent settlements
  - Recreation
  - Valley floor
- Above Ground Plant**
- Break Pressure Tank & Intermediate Pumping Station
  - Intermediate Pumping Station

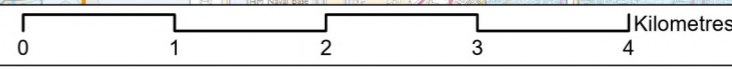
Coordinate system: British National Grid; Datum: OSGB 1936  
 Data sources: © Crown copyright and database rights 2026 Ordnance Survey 0100031673. Sources: Esri, TomTom, Garmin, FAO, NOAA, USGS, © OpenStreetMap contributors, and the GIS User Community, © Hampshire County Council, All rights reserved.

PROJECT TITLE  
 Hampshire Water Transfer and Water Recycling Project

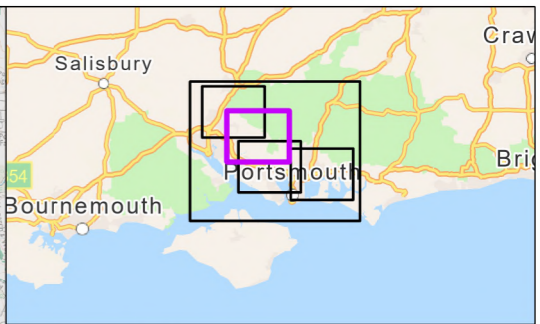
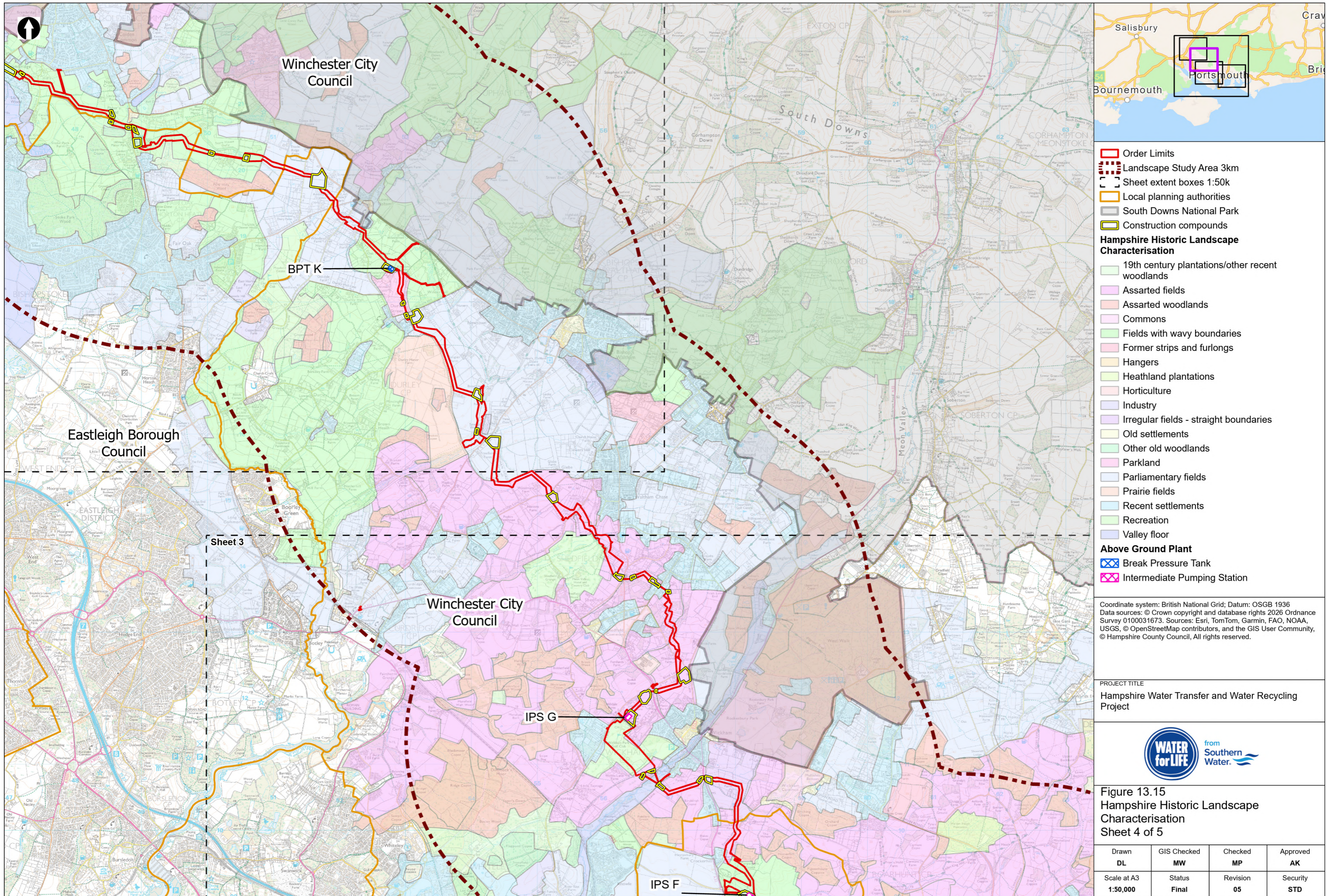


Figure 13.15  
 Hampshire Historic Landscape Characterisation  
 Sheet 3 of 5

Drawn <b>DL</b>	GIS Checked <b>MW</b>	Checked <b>MP</b>	Approved <b>AK</b>
Scale at A3 <b>1:50,000</b>	Status <b>Final</b>	Revision <b>05</b>	Security <b>STD</b>



Drawing Number  
**PC5223-RHD-ES-ZZ-D-Z-0139**



- Order Limits
  - Landscape Study Area 3km
  - Sheet extent boxes 1:50k
  - Local planning authorities
  - South Downs National Park
  - Construction compounds
- Hampshire Historic Landscape Characterisation**
- 19th century plantations/other recent woodlands
  - Assarted fields
  - Assarted woodlands
  - Commons
  - Fields with wavy boundaries
  - Former strips and furlongs
  - Hangers
  - Heathland plantations
  - Horticulture
  - Industry
  - Irregular fields - straight boundaries
  - Old settlements
  - Other old woodlands
  - Parkland
  - Parliamentary fields
  - Prairie fields
  - Recent settlements
  - Recreation
  - Valley floor
- Above Ground Plant**
- Break Pressure Tank
  - Intermediate Pumping Station

Coordinate system: British National Grid; Datum: OSGB 1936  
 Data sources: © Crown copyright and database rights 2026 Ordnance Survey 0100031673. Sources: Esri, TomTom, Garmin, FAO, NOAA, USGS, © OpenStreetMap contributors, and the GIS User Community, © Hampshire County Council, All rights reserved.

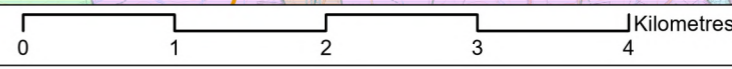
PROJECT TITLE  
 Hampshire Water Transfer and Water Recycling Project



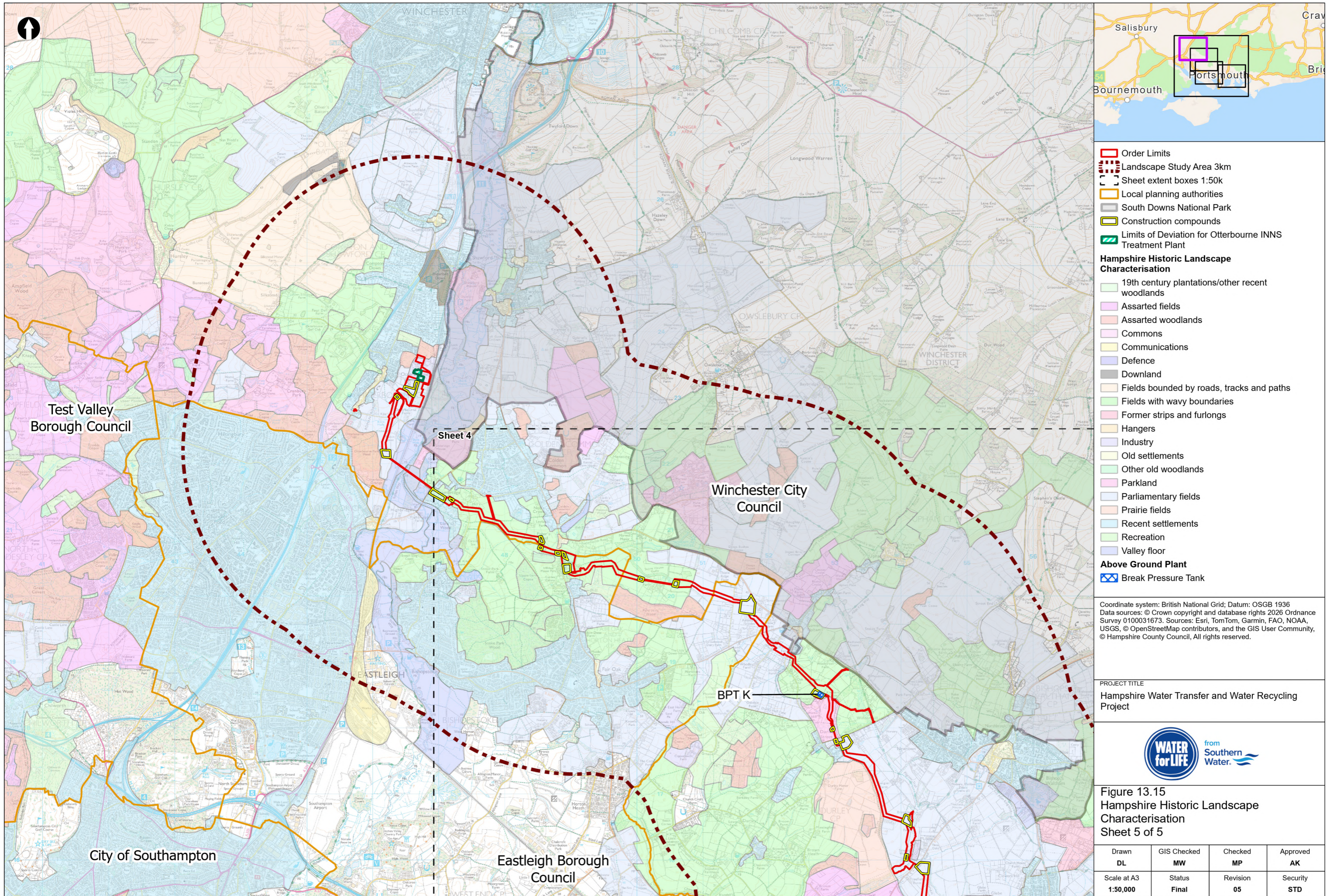
Figure 13.15  
 Hampshire Historic Landscape Characterisation  
 Sheet 4 of 5

Drawn <b>DL</b>	GIS Checked <b>MW</b>	Checked <b>MP</b>	Approved <b>AK</b>
Scale at A3 <b>1:50,000</b>	Status <b>Final</b>	Revision <b>05</b>	Security <b>STD</b>

© Southern Water 2026  
 This document is issued for the party which commissioned it and for specific purposes connected with the captioned project only. It should not be relied upon by any other party or used for any other purpose.  
 We accept no responsibility for the consequences of this document being relied upon by any other party, or being used for any other purpose, or containing any error or omission which is due to an error or omission in data supplied to us by other parties.



Drawing Number  
**PC5223-RHD-ES-ZZ-D-Z-0139**



- Order Limits
  - Landscape Study Area 3km
  - Sheet extent boxes 1:50k
  - Local planning authorities
  - South Downs National Park
  - Construction compounds
  - Limits of Deviation for Otterbourne INNS Treatment Plant
- Hampshire Historic Landscape Characterisation**
- 19th century plantations/other recent woodlands
  - Assarted fields
  - Assarted woodlands
  - Commons
  - Communications
  - Defence
  - Downland
  - Fields bounded by roads, tracks and paths
  - Fields with wavy boundaries
  - Former strips and furlongs
  - Hangers
  - Industry
  - Old settlements
  - Other old woodlands
  - Parkland
  - Parliamentary fields
  - Prairie fields
  - Recent settlements
  - Recreation
  - Valley floor
- Above Ground Plant**
- Break Pressure Tank

Coordinate system: British National Grid; Datum: OSGB 1936  
 Data sources: © Crown copyright and database rights 2026 Ordnance Survey 0100031673. Sources: Esri, TomTom, Garmin, FAO, NOAA, USGS, © OpenStreetMap contributors, and the GIS User Community, © Hampshire County Council, All rights reserved.

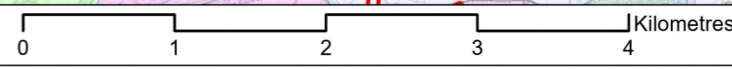
PROJECT TITLE  
 Hampshire Water Transfer and Water Recycling Project



Figure 13.15  
 Hampshire Historic Landscape Characterisation  
 Sheet 5 of 5

Drawn DL	GIS Checked MW	Checked MP	Approved AK
Scale at A3 1:50,000	Status Final	Revision 05	Security STD

© Southern Water 2026  
 This document is issued for the party which commissioned it and for specific purposes connected with the captioned project only. It should not be relied upon by any other party or used for any other purpose.  
 We accept no responsibility for the consequences of this document being relied upon by any other party, or being used for any other purpose, or containing any error or omission which is due to an error or omission in data supplied to us by other parties.



Drawing Number  
 PC5223-RHD-ES-ZZ-D-Z-0139